

Oak Hope Chest

David Hamann

May 2006

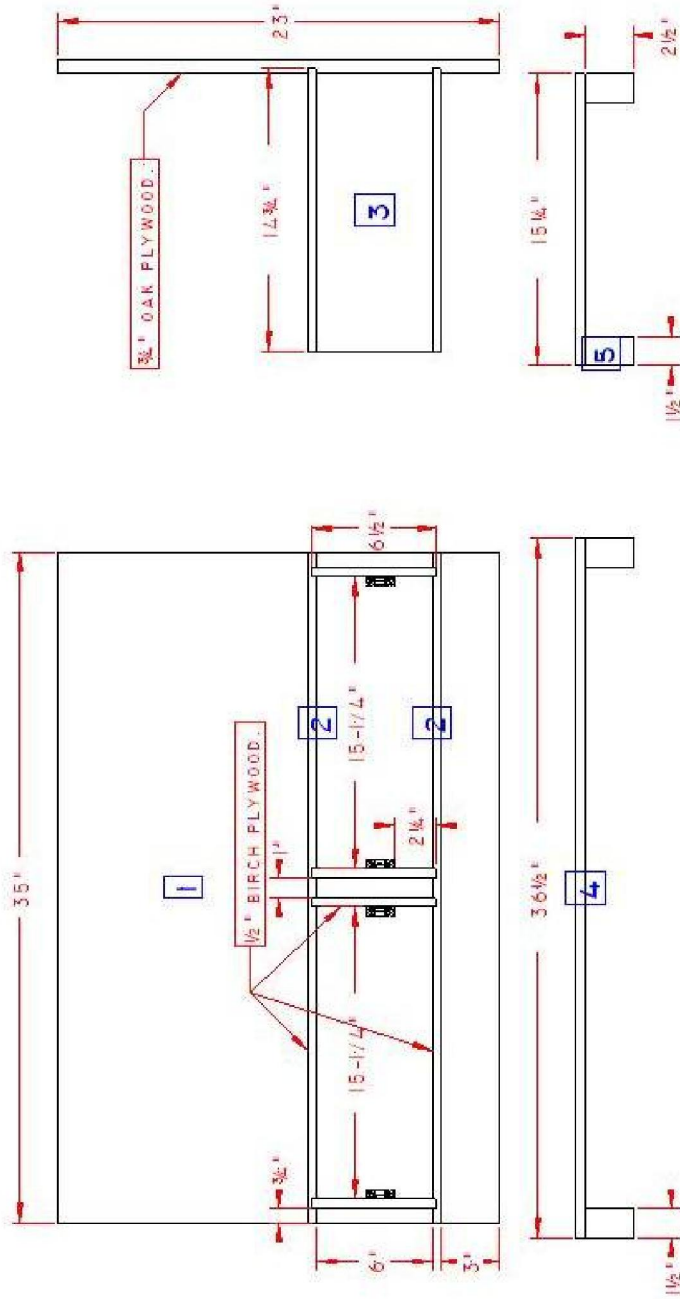


Parts List

part	name	material	qty	thickness	width	length
1	case back	oak plywood	1	3/4	23	35
2	drawer top & bottom	birch plywood	2	1/2	14 3/4	35
3	drawer slide panels	birch plywood	4	1/2	6 1/2	14 1/2
4	bottom	birch plywood	1	1/2	15 1/4	36 1/2
5	legs	scrape	4	1 1/2	1 1/2	2 1/2
6	front rails	oak	3	3/4	2	33
7	front stiles	oak	1	3/4	2	20
8	front middle stile	oak	1	3/4	2	10 1/2
9	front drawer stile	oak	1	3/4	2	4 1/2
10	side rails	oak	3	3/4	2	12 1/2
11	side back stile	oak	1	3/4	1 1/4	20
12	side back stile	oak	1	3/4	2	20
13	front bottom trim	oak	1	3/4	3 1/2	38
14	side bottom trim	oak	2	3/4	3 1/2	16
15	top field	oak plywood	1	3/4	15	26
16	top long trim	oak	2	3/4	1	38
17	top short trim	oak	2	3/4	1	17
18	front large panels	oak	2	3/4	15 3/4	10 1/2
19	drawer fronts	oak	2	3/4	15 3/4	4 1/2
21	side large panel	oak	2	3/4	12 1/2	10 1/2
22	side small panel	oak	2	3/4	12 1/2	4 1/2
23	drawer front	poplar	1	1/2	3 1/2	14 3/4
24	drawer back	poplar	1	1/2	3 1/2	14 1/4
25	drawer sides	poplar	2	1/2	3 1/2	14
26	drawer bottom	hardboard	1	1/4	14 1/4	13 3/4

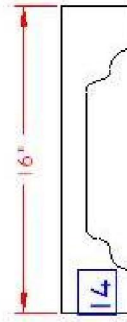
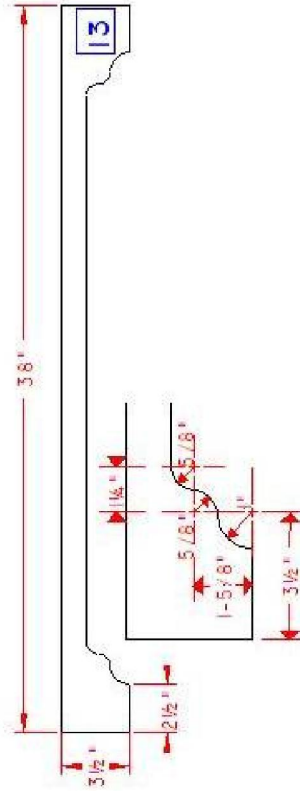
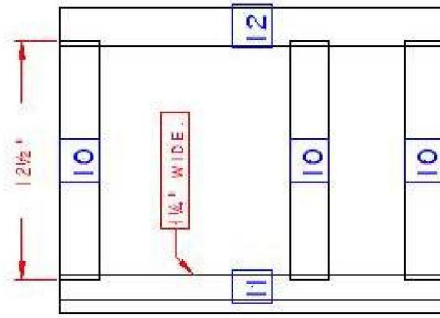
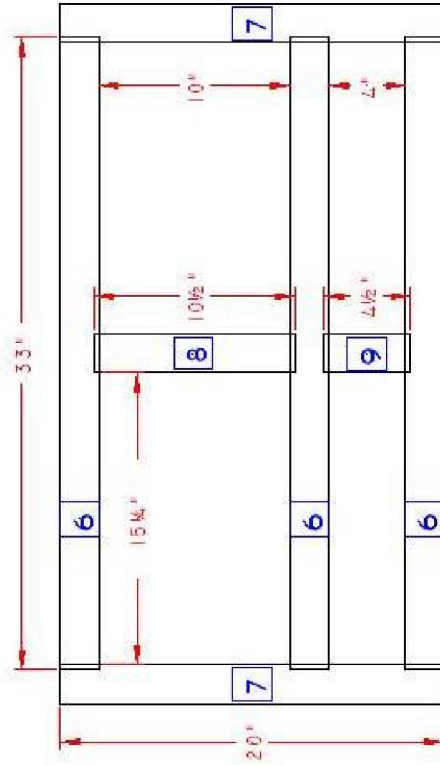
part	supplier	qty	order #	description
piano hinge	Rockler	1	20667	48"L x 1-1/16"W, Antique Brass
lid lift	Rockler	1	39529	Quiet Action Lid Support
handles	Rockler	2	20539	Weathered Brass Swing Pull, 96mm
drawer slides	Rockler	2	32474	Accuride series 3832 Slides, Zinc, 14" length
raised panel bit	MLCS	1	8693	12° Face & Quarter Round Raised Panel Bit

CASE IS CENTERED SIDE TO SIDE ON THE BOTTOM. CASE BACK IS FLUSH WITH THE BOTTOM BACK.
 ALL GROVES & DADOS ARE 1/4" DEEP. THEY ARE SIZED TO FIT THE PLYWOOD.
 THE PANELS SUPPORTING THE DRAWER SLIDES DO NOT SIT IN DADOS IN THE BACK OF THE CASE.
 ONLY THE TOP AND BOTTOM OF THE DRAWER ASSEMBLY SIT IN GROVES IN THE BACK OF THE CASE.
 THE DRAWER SLIDES AND PULLS CAME FROM RÖCKLER. THE SLIDES ARE 14" ACCURIDE 3632 FULL EXTENSION #32474.

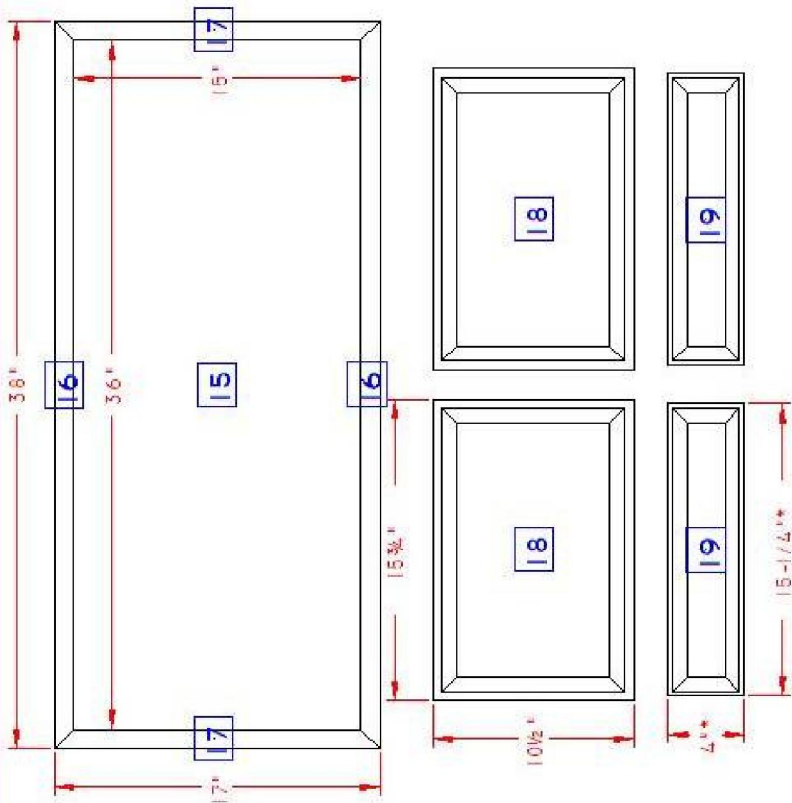


Hope Chest	
1027-11	
06/28/06	
DEL DEH	
PARADISE	
Case Construction	1 of 4

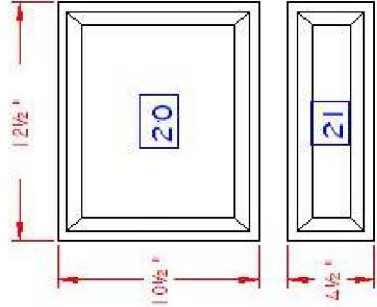
NOTES:
 ALL FACE FRAME MEMBERS ARE 2" WIDE UNLESS NOTED.
 1/4" GROOVE CENTERED ON ALL INSIDE FACES.
 1/4" TENNON AND POCKET SCREWS TO HOLD FRAME TOGETHER.
 BISCUITS TO HOLD FRONT FRAME TO SIDE FRAMES.



Hope Chest	
1027-11	
06/28/06	
DEL	DEL
PARADISE	
Face Frame Construction	2 OF 4



NOTES:
 TOP FIELD IS 3/4" OAK PLYWOOD WITH 1" OAK TRIM.
 ATTACH WITH BISCUITS.
 PANELS ARE SOLID 3/4" OAK.

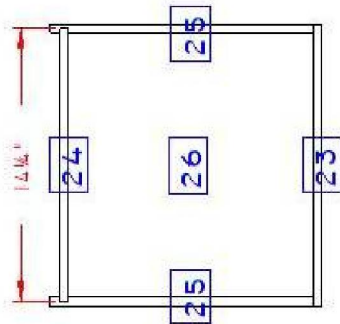


* DRAWER FRONTS (19) ARE SIZED TO
 BE 1/16" CLEARANCE ALL AROUND. I
 USED THE SAME PANEL BIT I USED
 FOR THE PANELS.

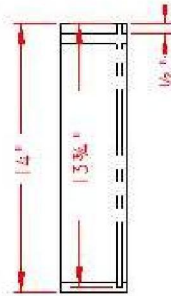
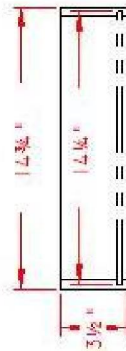


PANEL & DRAWER FRONT PROFILE
 12° FACE & QTRROUND
 MLCS WOODWORKING #8693

Hope Chest	
1027-11	
06/28/06	
DEL. DES.	
PARADE	
Panel & Top Construction	3 of 4



SIDES(25) ARE JOINED TO THE FRONT(23) USING HALF BLIND DOVETAILS.
 BOTTOM(26) SITS IN A 1/4" GROOVE, 1/4" FROM THE BOTTOM OF THE
 SIDES(25) AND THE FRONT(23).
 BACK(24) SITS IN A DADO THAT IS 1/4" DEEP AND SIZED TO FIT THE BACK.



Hope Chest		Drawer Details	
102" x 1"			4 of 4
0.57 28.706			
DEH	DEH		
PARADISE			